

A large nuclear explosion is shown from a low angle, with a massive, billowing mushroom cloud rising into a clear blue sky. The base of the cloud is bright white and yellow, indicating intense heat and fire. The cloud's stem is thick and dark, leading up to a large, rounded top that spreads out. The overall scene conveys a sense of immense power and destruction.

What is SANC?

SANC

(Systems Approach to Nursery Certification)

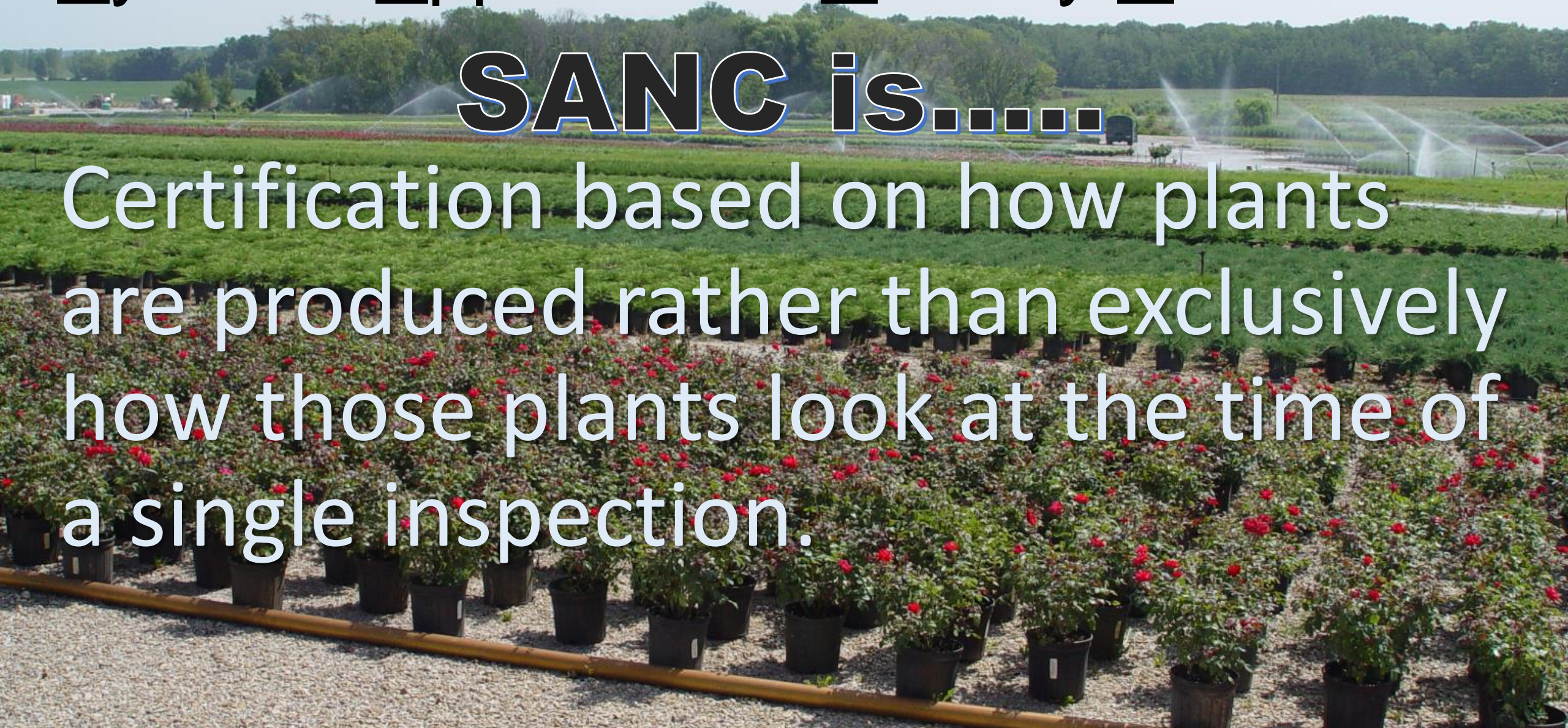
**SANC is a voluntary
audit based nursery
certification program**



Systems Approach to Nursery Certification

SANC is.....

Certification based on how plants are produced rather than exclusively how those plants look at the time of a single inspection.



For example, if you are certifying that a plant is free from harmful pests would you rather:

OR

**Look at it
ONCE**



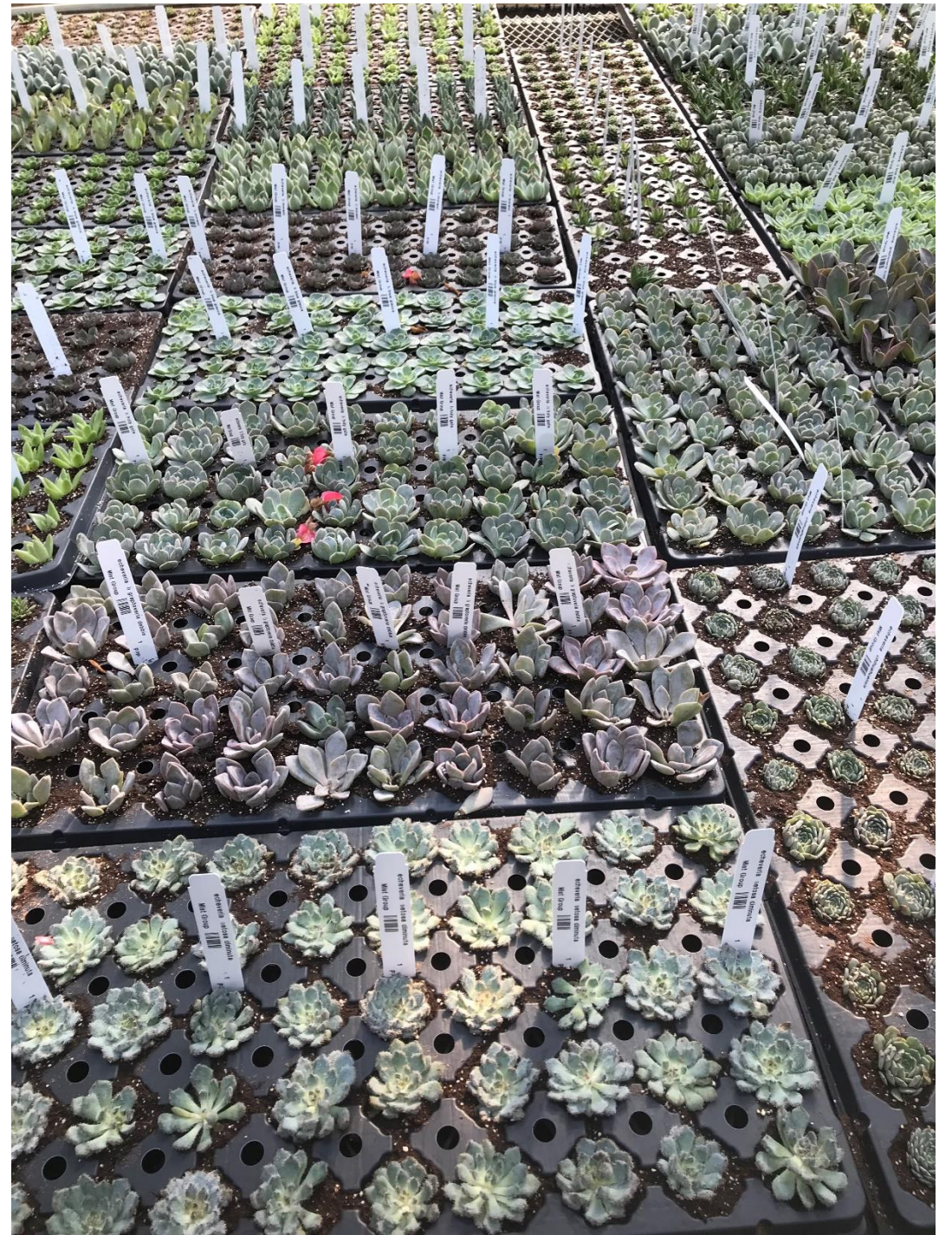
Know that the plant:

- Originates from cleanest available stock
- That good sanitation measures are practiced
- That a scouting program is in place at the growing site
- That the grower recognizes key pests and employs appropriate controls for pests.



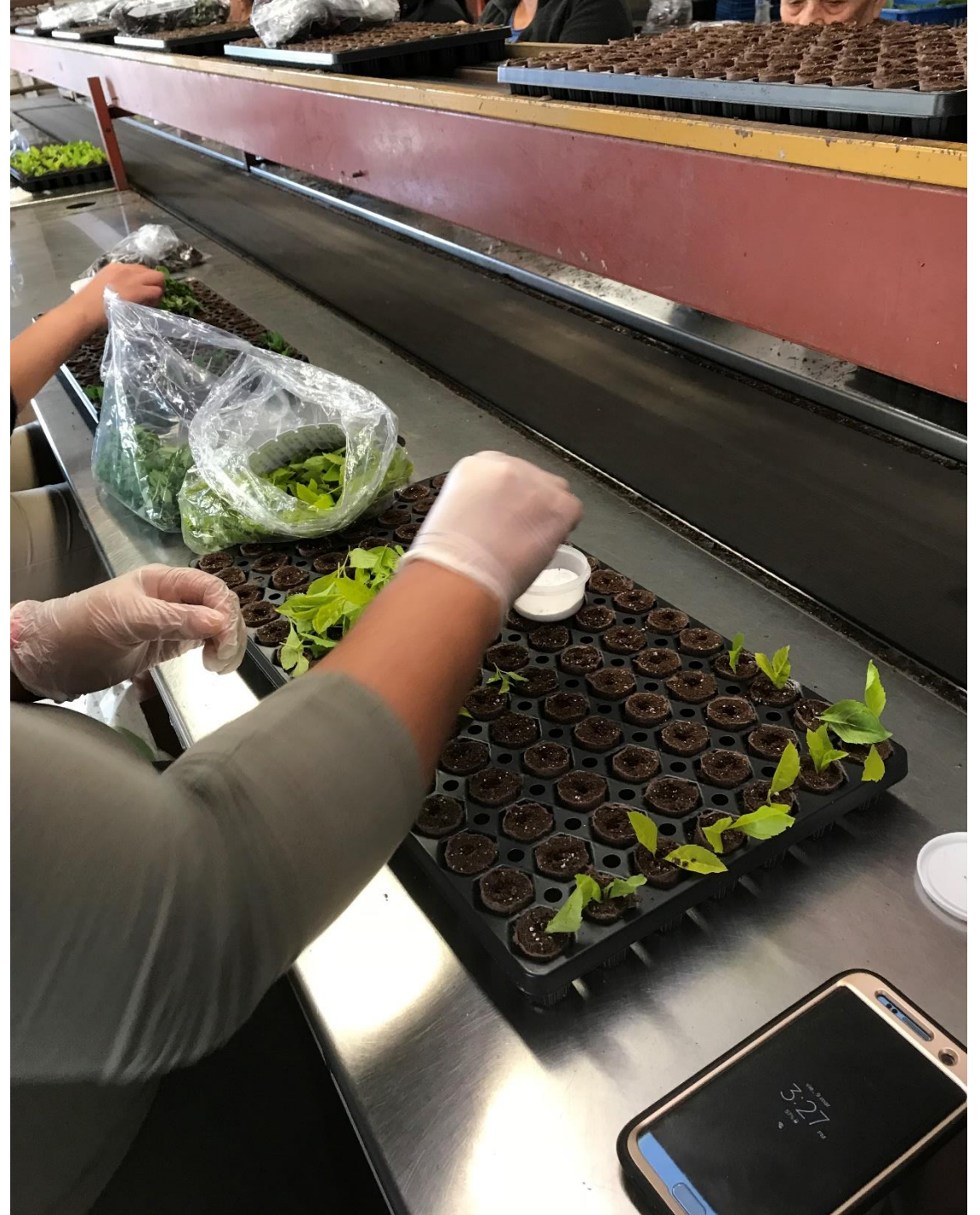
For Example

Visual inspection of these plants at the time of shipping or receiving would indicate they are healthy and clean.

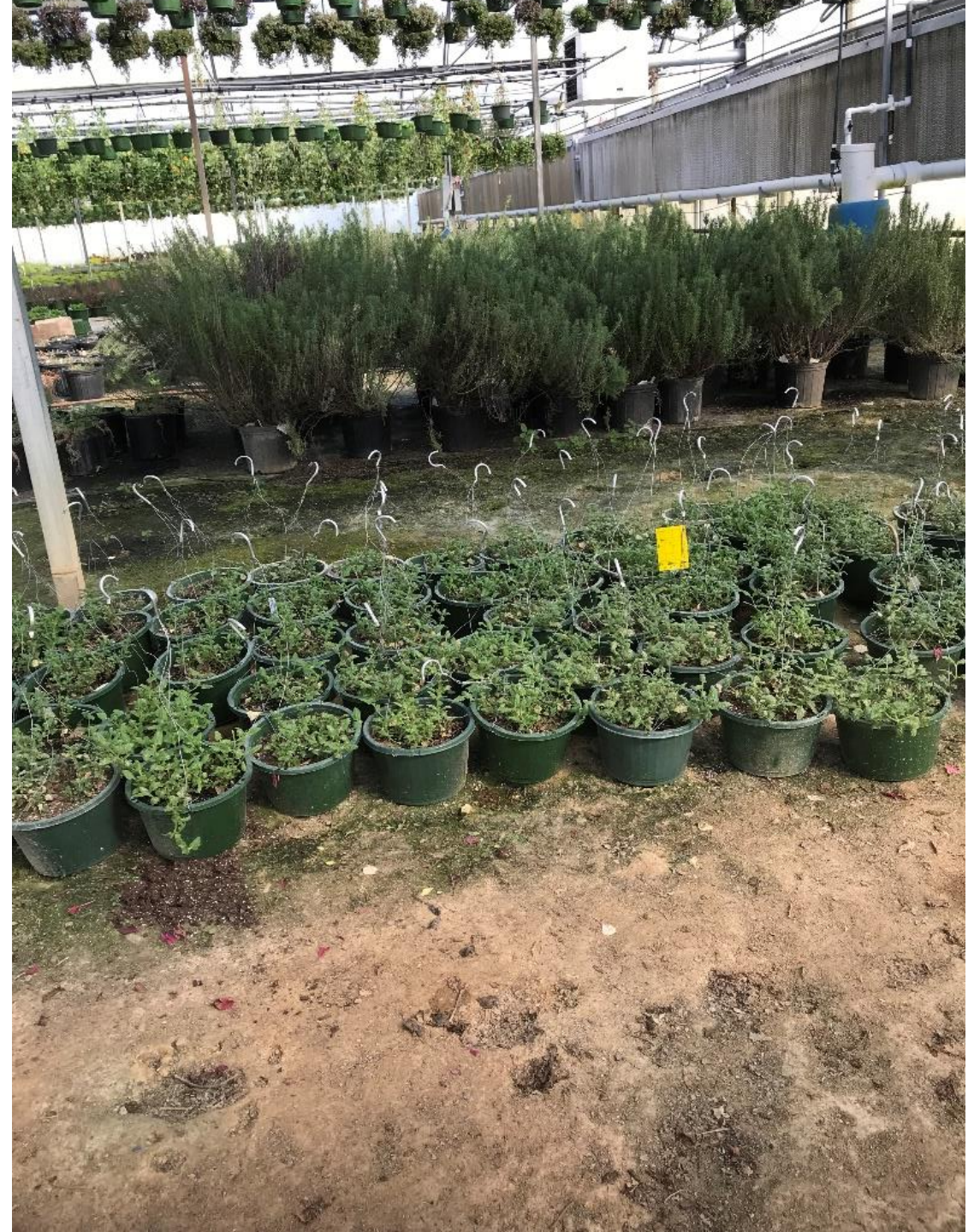


However an analysis of where and how the plants are produced highlights significant risks to the final product that may not be visible at the time of inspection.

SANC calls this
risk assessment



Example Risk #1:
Plants in production are placed
directly on soil with no barrier.



Example Risk #2

Although a double door entry system with thrips barrier is in place, employees leave the exterior door open, reducing its ability to prevent the entrance of insect pests.



Example Risk #3

Although employees are taught to sanitize their hands while working, no plan is in place to sanitize floors or prevent the movement of pathogens on employees shoes.





**It all boils down to
RISK MANAGEMENT**

- **Prevent problems coming in**
- **Monitor and scout crops for issues**
- **Accurately diagnose pests/diseases**
- **Address problems and Document**
- **Audit**

**In order to
AVOID SHIPPING PESTS/PATHOGENS**

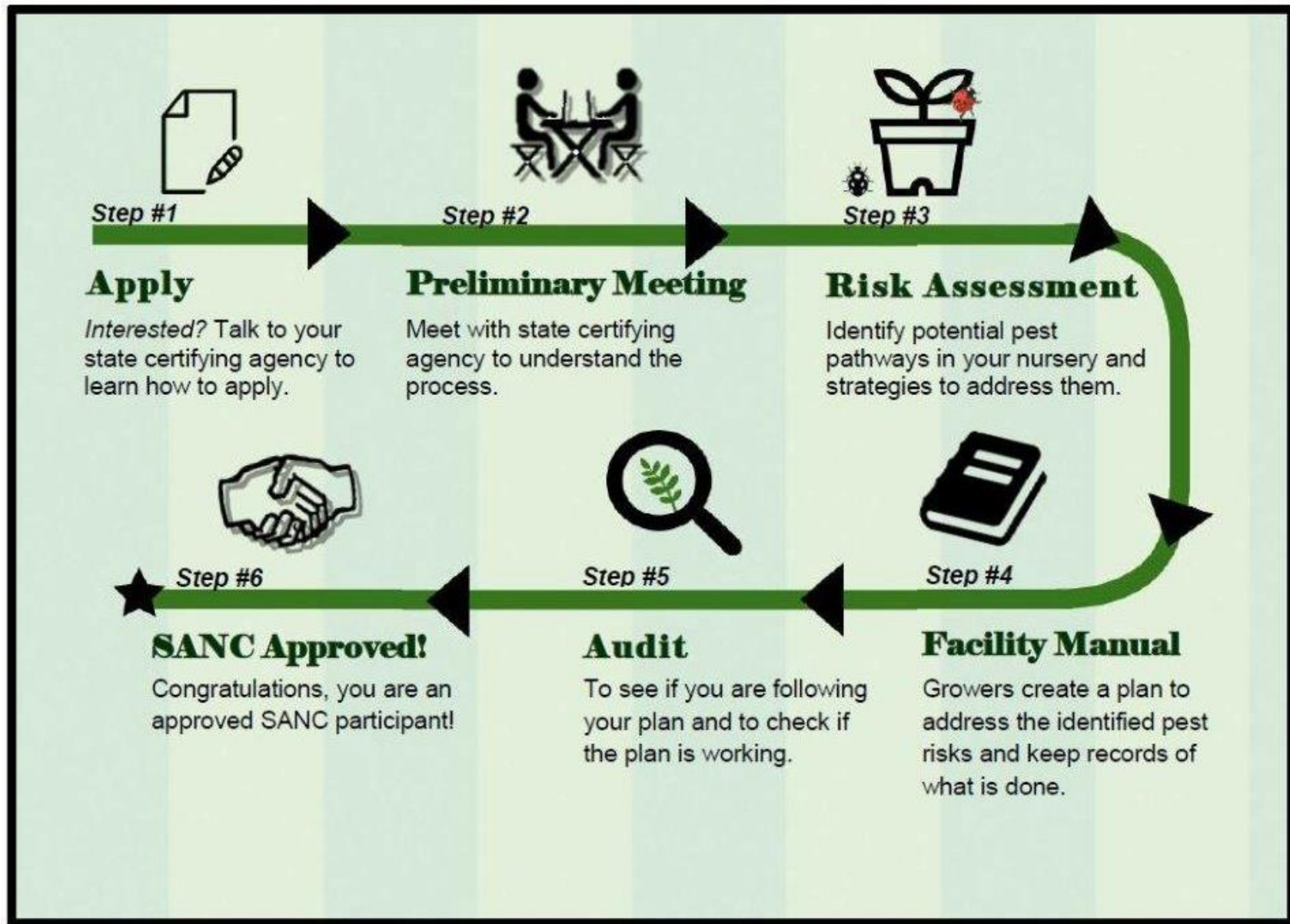
Who is involved in SANC?

- National Plant Board 
- State Departments of Agriculture
- AmericanHort  AmericanHort[®]
- USDA-APHIS-PPQ 
- Nursery and Greenhouse Owners and Managers
- Horticulture Inspection Society
- Nursery Inspectors



What to Expect from Training

- Learn the inspector's role
- Learn the Nursery's role
- Hear the benefits of the SANC program to nurseries
- Understanding audit inspections versus snapshot or end point inspections
- You will also gain base knowledge to be able to answer questions about SANC from your nurseries.



Training will encompass understanding the steps involved for a nursery to become SANC certified